

Pulse Report

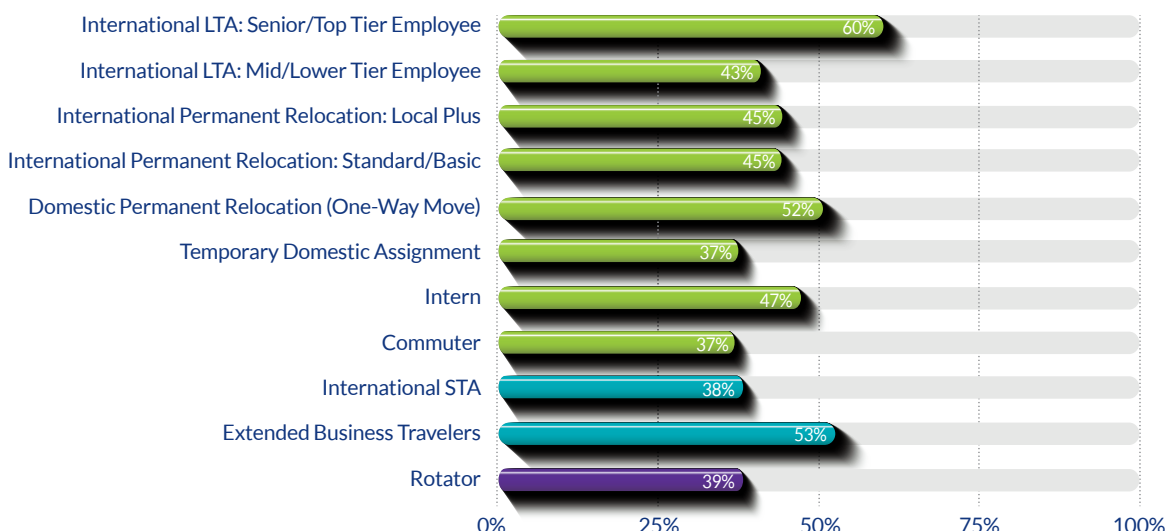
Changing Mobility Move Types

A recent survey of SIRVA clients revealed some interesting feedback about their expectations on mobility move types and populations.

Here's what they had to say:

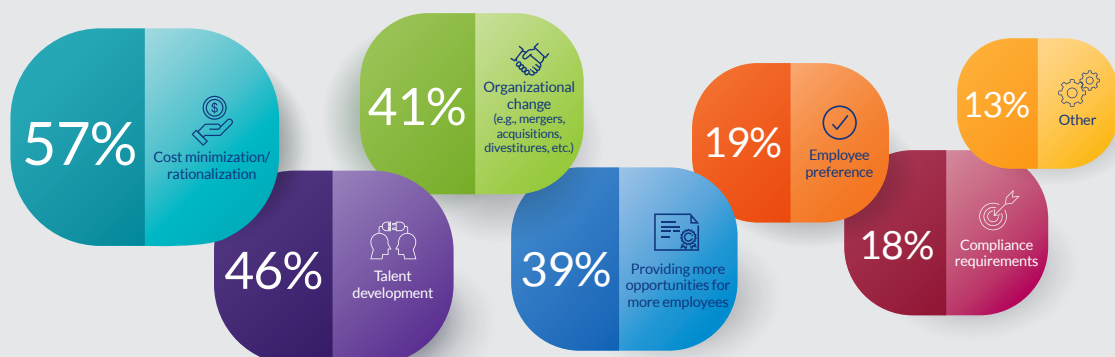
How do you expect population volume to shift in the next 1-3 years, depending on move type?

Stay the Same Increase Unsure

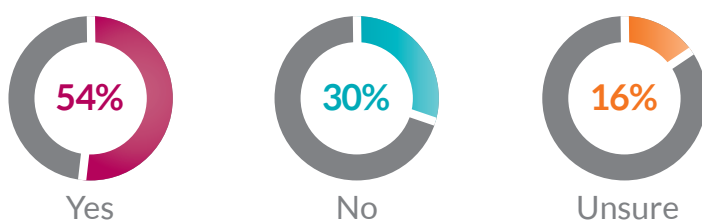


While many move types and populations are expected to stay the same, it's interesting to note that a significant number of participants expect an increase in the use of international short-term assignments (38%) and extended business travel (53%).

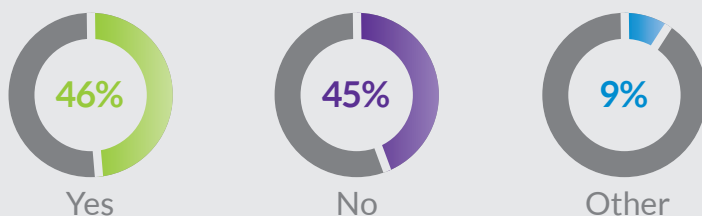
If you are anticipating a change in move type volumes, what is driving the change?



Have/will your relocation/mobility policies change based on changing move types?



Does the caseload of each mobility professional vary based on the move type(s) they support?



Almost half of the survey participants (45%) state that their companies do not adjust their mobility professionals' caseloads based on the move types that they support. Administrative support needed for a long-term move is more time-intensive than the support needed for permanent relocations. The data suggests that a significant number of mobility stakeholders would benefit from examining their mobility programs to seek opportunities for efficiencies and experience enhancement through the allocation of caseload based on move type and volumes.

About SIRVA Worldwide Relocation & Moving